

ActiveSecurity MyLogin

Setup and User Guide

Contents

1	Installation.....	2
1.1	Smart card reader	2
1.2	MyLogin software.....	2
1.2.1	Supported environments	2
1.2.2	Installation package.....	2
1.2.3	Installation procedure	2
1.2.4	Uninstall	2
2	User Guide.....	3
2.1	Introduction	3
2.2	Start	3
2.3	Log in using username and password	3
2.4	Smart card login	4
2.4.1	Supported smart cards	4
2.4.2	Easy enrolment during log in.....	4
2.4.3	Log in using a previously enrolled card	5
2.5	After login.....	5
2.5.1	Remove card.....	6
2.5.2	Computer locked - unlock	6
2.5.3	Options (Windows Security).....	6
2.6	Smart Card Manager	8
2.6.1	Initialize smart card PIN	9
2.6.2	User credentials.....	9
	Appendix A: Registry settings.....	10



1 Installation

1.1 Smart card reader

MyLogin uses a specific smart card reader. The reader name is ACS ACR122, product number ACR122U-A2NR. Other readers are not supported. For more information on reader installation see separate reader installation guide.



Figure 1, ACR ACS122 smart card reader

1.2 MyLogin software

1.2.1 Supported environments

MyLogin currently supports Windows XP with Service Pack 2 or newer. Support for other operating systems will be added in near future.

1.2.2 Installation package

MyLogin is distributed as a Microsoft Installer (MSI) installation package. The installation is done by running the MSI package or in systems without the MSI, by running the provided setup.exe.

Because MyLogin is distributed as a MSI-package, it is possible to install it to workstations through the domain's Active Directory group policy. This makes it easy to install to several workstations with minimal manual work.

1.2.3 Installation procedure

1. Start the installation by running the MSI-installation package.
2. Follow the instructions given by the installation program.
3. Select the installation folder. Usually the suggested path is appropriate, but it can be changed if required.
4. Wait for the installation to finish.
5. Restart computer.

✓ **MyLogin is now installed and ready for use.**

1.2.4 Uninstall

MyLogin can be uninstalled from Control Panel, Add remove programs. After uninstall, restart your computer and MyLogin is no longer in use.

2 User Guide

2.1 Introduction

In Windows XP and 2003 Server the user usually logs on by typing in a username, password and perhaps a domain. Microsoft calls this user interface GINA (Graphical Identification and Authentication).

MyLogin replaces the original GINA installed in the system. MyLogin works in the same way, except that it's also possible to login using a smart card containing the user's credentials.

MyLogin stores the user's credentials safely on a smart card. The credentials are protected by MyLogin and a user selected PIN. Login using a smart card makes the login process much faster. To log in, the user only needs to place the smart card on the reader and type the PIN related to this card.

2.2 Start

When computer is started the Welcome screen is shown. To log in you can either use the traditional username and password or by placing a smart card on the reader.

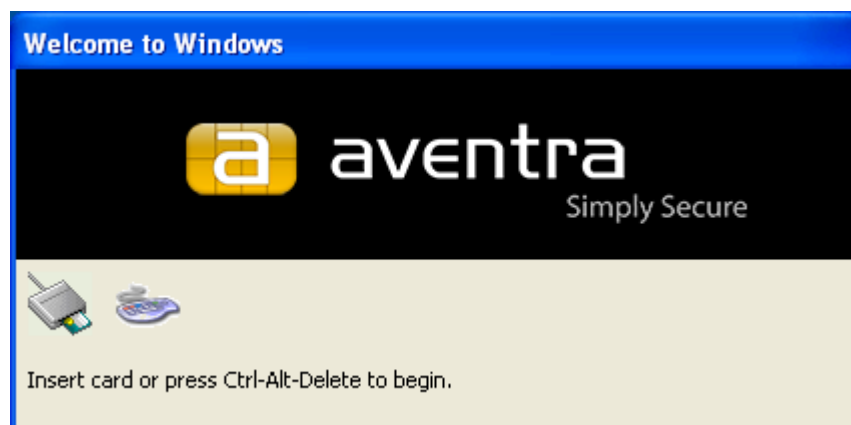


Figure 2, Welcome screen

2.3 Log in using username and password

To log in using username and password, press Ctrl-Alt-Del. After that MyLogin asks for your username and password. Enter username, password and possibly the log on target and then press *OK* button or *Enter* on the keyboard.

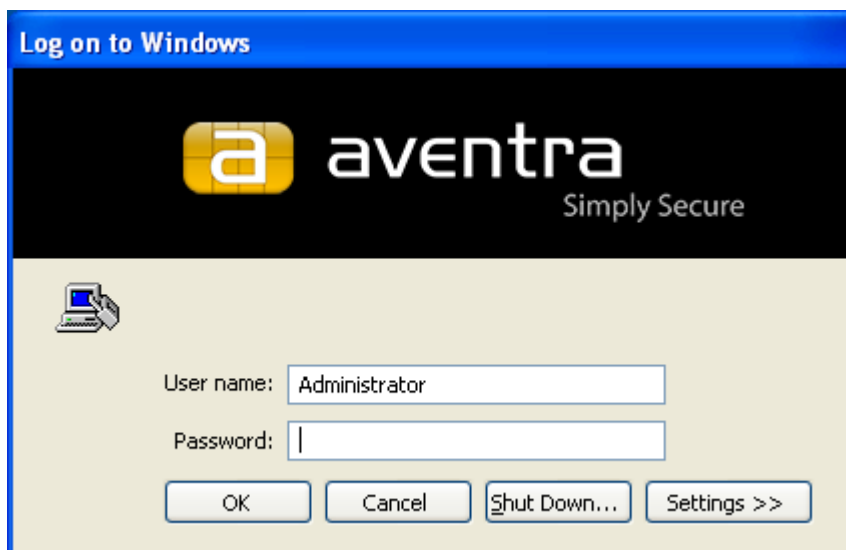


Figure 3, Log on using username and password

- If you like to cancel and not log in, press *Cancel* or ESC on the keyboard.
- The *Settings* button shows the log on target. If the computer is a member of a domain, you can either select to log on using domain, or the local machine.
- *Shutdown* turns the computer off. A confirmation dialog is shown asking the user to confirm the shut down.

MyLogin remembers the username of the user that has previously logged in. This username is pre-entered into the username field.

2.4 Smart card login

MyLogin makes it possible to log in to the computer (or domain) by using a smart card. The smart card holds the user's credentials.

2.4.1 Supported smart cards

MyLogin currently supports Mifare Classic 1K smart cards. Existing smart card can be used and it does not have to be empty. Only the used sectors should be empty and have keys set to the default value (0x FFFFFFFF). Please note that MyLogin writes the credentials to the configured sectors, so any unprotected sector's data could be overwritten. By default, the used sectors are 8-12, but this can be changed in the configuration.

2.4.2 Easy enrolment during log in

If you don't have a previously enrolled card, you can enrol your card at the same time you log in to the computer. Place an empty Mifare Classic card (with free sectors from 8 and above or according to configuration) on the ACS smart card reader. MyLogin reads the card and notices that no credentials are found on the card and displays a dialog for card enrolment and login.

- Enter username and password
- Select log on target (a domain or local computer if applicable in your environment)
- Enter the PIN, 4-8 digits. Enter the same PIN to both the *PIN* and *Confirm PIN* fields.
- Click *Cancel* or press *ESC* on the keyboard to cancel the operation
- Click *OK* or press *Enter* on the keyboard to log in



Smart Card Enrolment and Login

a aventra
Simply Secure

Your smart card has not yet been prepared for use. Please enter your user name and password and choose a 4 to 8 digit PIN. When clicking 'OK' your credentials will be stored to your smart card and protected by your PIN. You will then be able to log in to your computer and unlock your desktop by just placing your smart card on your reader and entering your PIN.

User name:

Password:

Log on to: ▼

PIN

Confirm PIN

Figure 4, Enrol a smart card and log in

If the log in to Windows succeeds the credentials are written to the smart card. If the writing to the card fails, the user is logged in, but no credentials are written on the card, it is still “empty”. You can retry this do this procedure again, by logging off and placing the same card on the smart card reader.

2.4.3 Log in using a previously enrolled card

Place card on reader, MyLogin identifies the card and asks your PIN. Enter the PIN and press *OK*.



Smart card login

a aventra
Simply Secure

Enter your PIN

Figure 5, Log in using smart card

2.5 After login

After login the workstation is ready for use. The functions related to MyLogin are described in the chapters below.

2.5.1 Remove card

If you have logged in using a smart card an event is fired when the card is removed. Depending on configuration, the event can be ignored, the computer locked or the user logged off. By default the computer is locked when card is removed.

2.5.2 Computer locked - unlock

After login the computer may be locked, either automatically (screen saver etc.) or by the user. Like when logging in, place a previously enrolled smart card on the reader, or press Ctrl-Alt-Del to unlock the computer. Unlock works like login, except that only the previously logged in user or a computer administrator can unlock the computer. An empty smart card cannot be used to unlock the computer, because user credentials are always required to unlock a computer.

NOTE! When a user is logged on, an administrator can force the logged on user to log off. If this happens, any unsaved data may be lost.

2.5.3 Options (Windows Security)

After login the user can access MyLogin options by pressing Ctrl-Alt-Del on the keyboard.



Figure 6, Options

In this window the user can do the things described in the following subchapters.

2.5.3.1 Lock Computer

This locks the computer. After this the computer has to be unlocked (see chapter 2.5.2).

2.5.3.2 Log Off

Logs off the current user. After this the user needs to log in as described in chapters 2.3 or 2.4.

2.5.3.3 Change Password

Change the logged in user's password. Password is not changed on the smart card.



Password change

a **aventra**
Simply Secure

Old password

New password

Confirm password

OK Cancel

Figure 7, Change password

2.5.3.4 Task Manager

By clicking on the *Task Manager* button the Windows task manager is shown.

2.5.3.5 Change PIN

Change PIN on the card placed on the reader.



PIN change

a **aventra**
Simply Secure

Select smart card reader

ACS ACR122 0

Old PIN

New PIN

Confirm new PIN

OK Cancel

Figure 8, Change PIN

2.5.3.6 Manage the smart card

Manage the card, see chapter 2.6.

2.5.3.7 Release card

Release the card means that removal of the card will no longer be monitored. After the card has been released, it can be removed from the reader without any event being triggered (e.g. Computer locked or user logged off, see chapter 2.5.1).

2.5.3.8 Cancel

Cancel button or pressing ESC on the keyboard closes the options window.

2.5.3.9 About

Clicking the *About* button shows information about the MyLogin software. Here you can see copyright notices and version number.

2.6 Smart Card Manager

Smart card manager is used to manage the cards. With the manager you can initialize the PIN, Write your credentials to the card or erase them from the card.

Smart Card Manager

Found a MIFARE card.
Credentials have been erased successfully.
Your PIN has been activated successfully.
Credentials were written successfully.

Initialize smart card PIN

Initial MIFARE key: FFFFFFFFFFFFFF

New PIN: ●●●● Confirm new PIN: ●●●●

Initialize

User credentials

User name: Administrator

Password: ●●●●●●●●

Log on to: avedemo.local

Write to smart card

Erase from card

Close

Figure 9, Smart Card Manager

2.6.1 Initialize smart card PIN

If you have a smart card with keys set to a known value, you can use this function to initialize your PIN. The initial Mifare key is entered as a hexadecimal value. For unused smart cards the key usually is FFFFFFFFFF (12 times F). Sometimes the keys have been changed, so to initialize the PIN you need to use that Mifare key instead.

2.6.2 User credentials

In this section you can write user credentials on the smart card or erase them from the card. To manage the credentials, the only thing you need to do is to first select the correct smart card reader and then place the card on the smart card reader. When a card is detected in the reader a message saying "Found a MIFARE card." is shown in the message area of the Smart Card Manager.

2.6.2.1 Write credentials

Using this function, you can write user credentials (user name, password and log on target) to the card. Enter user name, password and select the log on target and press *Write credentials*. MyLogin might ask for your PIN, depending on if it has recently been entered or not. Information on this operation is shown in the Smart Card Managers message area.

2.6.2.2 Erase credentials

This function allows you to erase the credentials from the card and reset the Mifare keys to the default value. Place the card on the reader as described above and click *Erase credentials*. MyLogin might ask for your PIN, depending on if it has recently been entered or not. This clears the credentials from the smart card and sets the Mifare keys to the default value (0xFFFFFFFF). Information on this operation is shown in the Smart Card Managers message area.

Appendix A: Registry settings

You can change this by adding or modifying the registry values in the way described here.

Registry keys location:

```
HKEY_LOCAL_MACHINE\Software\Aventra\ActiveSecurityMyLogin
```

A.1 Mifare sector configuration

You can use any Mifare Classic compliant smart cards, having free sectors for storing the credential data. These sectors are protected with keys other than the factory default keys; you know the keys of these sectors to use them for storing credential data. By default MyLogin uses the sectors between 8 and 12.

Name:

```
MifareSectorRange
```

Value (type String) format (and example):

```
FirstSector;LastSector (1;10)
```

It is recommended to reserve at least three sectors for credential data. There is no exact requirement, because theoretically a password can be up to 127 characters long, and a domain name up to 255 characters. Usually much shorter strings are used.

A.2 Card remove action configuration

After login with a smart card, MyLogin monitors the removal of the card. If the card has not been “released” (Ctrl+Alt+Del and select Release card) the removal of the card causes an event that can be reacted to in different ways. By default MyLogin locks the desktop. The behaviour can be changed by adding or modifying the following registry setting.

Name:

```
CardRemoveAction
```

Possible values (type DWORD):

Value	Description
2	Ignore event. No action is performed.
3	Lock workstation. Default value.
4	Log off. Logs off the user when card is removed from reader. Some application might prevent the log off.
9	Force log off. Forcibly logs off the user. Unsaved changes will be lost.